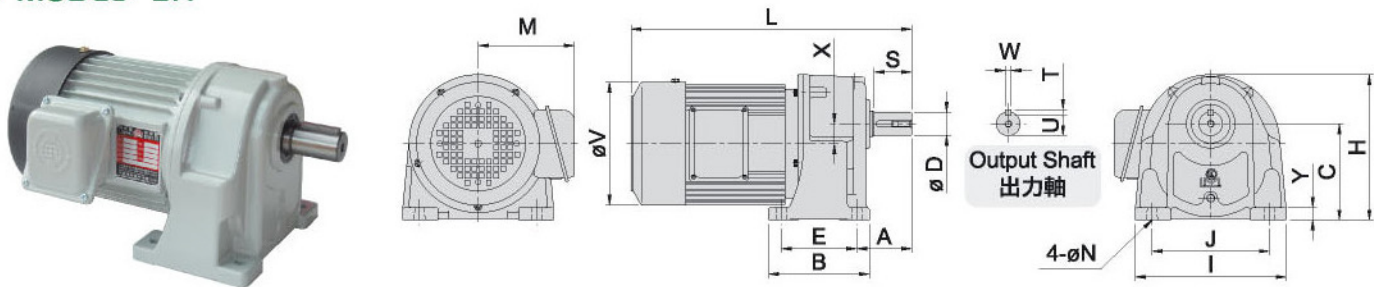


臥式減速機 HORIZONTAL TYPE REDUCER

MODEL: SH



尺寸表 Dimension

單位: m/m

馬達容量 Motor Capacity	型號 Model No.	減速比 Gear Ratio	A	E	B	J	I	C	H	Y	N	X	L	M	V	出力軸 Output Shaft					重量 Weight (kg)約
																D	S	W	T	U	
0.1KW 1/8HPx4P	10	1/3~1/50 (1/60~1/100)	46	40	65	110	135	85	129	12	9	17	280	100	119	18	30	5	5	15	5
	11	1/60~1/200	58	65	90	130	155	95	145	13	9	18	305	100	119	22	40	7	7	18	7
0.2KW 1/4HPx4P	10	1/3~1/30(1/40~1/60)	46	40	65	110	135	85	129	12	9	17	290	110	133	18	30	5	5	15	8
	11	1/40~1/90(1/100~1/120)	58	65	90	130	155	95	145	13	9	18	315	110	133	22	40	7	7	18	10
	12	1/100~1/200	66	90	120	140	180	115	175	15	11	23	330	110	133	28	45	7	7	24	11
0.4KW 1/2HPx4P	11	1/3~1/30(1/40~1/60)	58	65	90	130	155	95	145	13	9	18	320	115	147	22	40	7	7	18	12
	12	1/40~1/90(1/100~1/200)	66	90	120	140	180	115	175	15	11	23	335	115	147	28	45	7	7	24	13
	13	1/100~1/200	78	130	165	170	210	130	202	18	13	26	365	115	147	32	55	10	8	27	16
0.75KW 1HPx4P	12	1/3~1/30(1/40~1/60)	66	90	120	140	180	115	175	15	11	23	355	135	161	28	45	7	7	24	16
	13	1/30~1/90(1/100~1/120)	78	130	165	170	210	130	202	18	13	26	380	135	161	32	55	10	8	27	19
	14	1/100~1/200	95	150	195	210	255	150	240	20	15	28	425	135	161	40	65	10	8	35	44
1.5KW 2HPx4P	12	(1/3~1/40)	66	90	120	140	180	115	175	15	11	23	390	150	181	28	45	7	7	24	25
	13	1/3~1/25(1/30~1/50)	78	130	165	170	210	130	202	18	13	26	415	150	181	32	55	10	8	27	28
	14	1/60~1/100(1/125~1/170)	95	150	195	210	255	150	240	20	15	28	460	150	181	40	65	10	8	35	46
2.2KW 3HPx4P	15	1/100~1/200	115.5	170	230	265	330	185	293	25	19	38	490	150	181	50	80	14	9	44.5	50
	13	1/3~1/25	78	130	165	170	210	130	202	18	13	26	455	150	181	32	55	10	8	27	28
	14	1/30~1/50(1/60~1/100)	95	150	195	210	255	150	240	20	15	28	500	150	181	40	65	10	8	35	46
	15	1/60~1/100	115.5	170	230	265	330	185	293	25	19	38	515	160	212	50	80	14	9	44.5	60

註: 1. 表中()內數字係表示輕荷重使用。

2. 表中重量以配合三相馬達為主, 其它單相、剎車、直流、特殊等馬達重量另訂。

3. 表中L內數字以三相為主、剎車及其它特殊馬達另訂。

4. 馬達單頻, 單雙電壓依設計所須另訂。

5. 以上數值若有變更, 恕不另行通知。

- NOTES: 1. Values shown in paranthesis () are used for light loading.
2. Weights shown in the above chart are based on 3-phase motors, weights for single phase, brake, DC, or special motor shall be referred to specific values.
3. Values shown in "L" column are based on 3-phase, brake for other special motor refer to specific motor refer to specific values.
4. When the need arises to determine the special voltage frequency for single phase, please contact the Li-Ming application engineering team.
5. Above specifications are subject to change without prior notice.